



Pultruded FRP Cladding Attachment
Support System



Made Exclusively in the USA by



WHAT IS STRONGIRT®?

Strongwell's STRONGIRT® is the ideal continuous insulation (CI) cladding attachment support system. This all-FRP (fiberglass) pultruded composite uses a custom fire-retardant resin system and unique laminate design to offer superior pull out strength, excellent thermal efficiency, and the ability to work with any non-proprietary insulation (no routing or fabricating of rigid insulation is required).

The geometry of STRONGIRT offers self-draining to clear rainwater, and weep holes can be pre-fabricated or added in the field for additional drainage needs. The product has been engineered for strength and stiffness to support cladding, insulation, and wind loads, while offering a simple, durable, cost-effective solution for installers.

FEATURES & BENEFITS:

- 100% FRP system (no metal to rust or react)
- Superior pullout strength
- Invisible in rainscreen cavities
- Double fastening system on front flange
- Light weight
- Works with all non-proprietary insulation
- No in-field fabrication required
- 10' and 20' standard lengths (custom lengths available)
- Thermally efficient replacement to metal cladding attachment systems
- Code compliant





ELEMENTS OF DESIGN

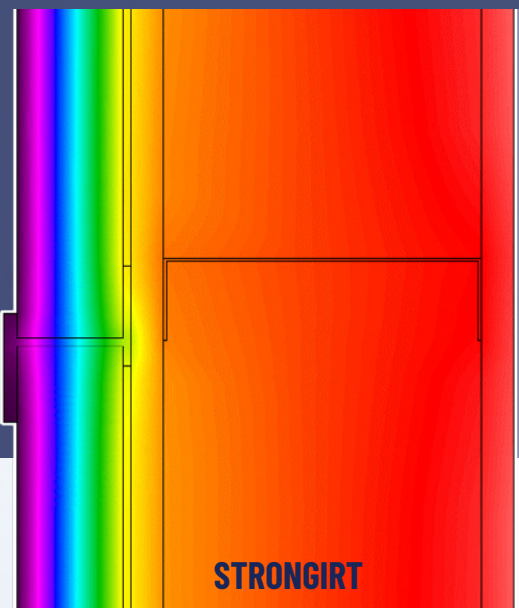
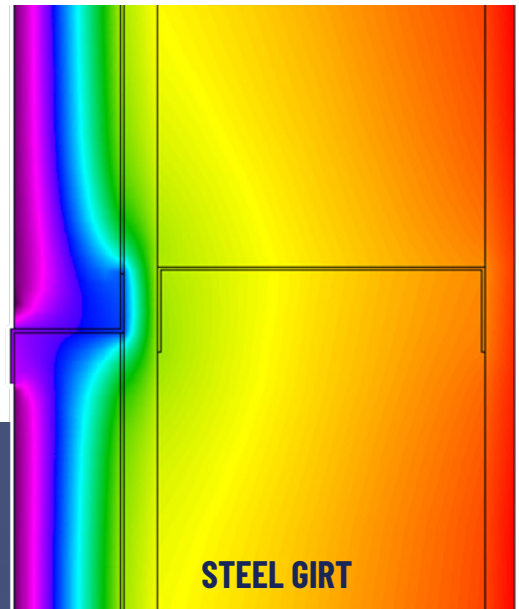
1. Pitched flanges for water mitigation
2. Insulation retention system
(no insulation fasteners needed)
3. Fastening lines
4. Line to drill weep holes (optional)
5. Weep holes (optional)

IMPROVED THERMAL PERFORMANCE

STRONGIRT is designed to lessen thermal bridging and create a well functioning wall assembly. The result of this is apparent there when compared to a steel girt in an identical installation.

Steel Girt R-Value = 7.14

STRONGIRT R-Value = 11.23



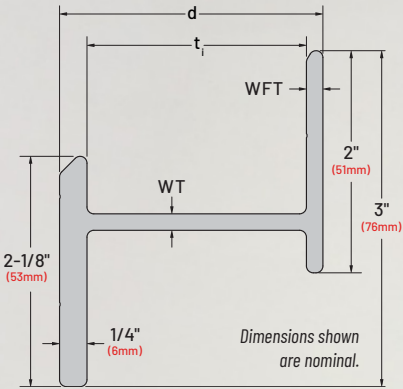


Shown with optional weep holes.
Available for multiple insulation thicknesses.

DIMENSIONS & AVAILABILITY

STRONGIRT profiles are designed to accommodate a range of insulation thicknesses. Strongwell offers two series of FRP girt. STRONGIRT is the standard-profile option, ideal for most rainscreen and continuous insulation applications where conventional cladding loads and/or wind loads are anticipated. STRONGIRT Ultra features a thicker web and flange, delivering enhanced structural capacity for projects that require increased load-bearing performance, greater stiffness, or wider girt spacing. Ultra is often selected for heavier cladding materials, taller walls, or more demanding environmental conditions. Both systems offer the same material advantages: 100% pultruded FRP, exceptional corrosion resistance, and high thermal efficiency.

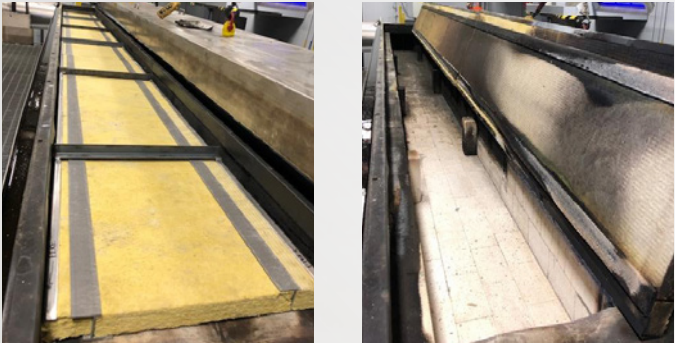
Insulation Thickness, t_i	STRONGIRT® Depth (nom.), d	Web Thickness (nom.), WT	Wall Flange Thickness (nom.), WFT
1.0" (25mm)	1.4" (36mm)	0.15" (4mm)	0.15" (4mm)
1.5" (38mm)	1.9" (48mm)		
2.0" (51mm)	2.4" (61mm)		
2.5" (64mm)	2.9" (74mm)		
3.0" (76mm)	3.4" (86mm)		
3.5" (89mm)	3.9" (99mm)		
4.0" (102mm)	4.4" (112mm)		
4.5" (114mm)	4.9" (124mm)		
5.0" (127mm)	5.4" (137mm)		
5.5" (140mm)	5.9" (150mm)		
6.0" (152mm)	6.4" (163mm)		
4.0" Ultra (102mm)	4.5" (114mm)	0.25" (6mm)	0.25" (6mm)
5.0" Ultra (127mm)	5.5" (140mm)		
5.5" Ultra (140mm)	6.0" (152mm)		
6.0" Ultra (152mm)	6.5" (165mm)		
8.0" Ultra (203mm)	8.5" (216mm)		



PROPERTIES

Property	Test Method	Avg. Ultimate Values*
Tensile Strength (LW)	ASTM D638	60,657 psi (418 N/mm²)
Tensile Modulus (LW)	ASTM D638	3.42 x 10 ⁶ psi (23.58 x 10 ³ N/mm²)
Short Beam Shear Strength (LW)	ASTM D2344	4,626 psi (31.9 N/mm²)
Screw Pullout Load*	ASTM D1761	865 lbf (392 kgf)
Flammability Characteristics†	ASTM E84	Flame Spread: Class A Smoke Density: Class A
	NFPA 285	Passed
Thermal Conductivity‡	ASTM E1530	2.56 BTU-in/ft²-Hr/°F (0.367 W/(m°K))
Bearing Load	ASTM D5961 (Proc. A)	1344 lb (609.6 kgf)
Screw Head Pull-Through Load*	ASTM D7332 (Proc. B)	909 lb (412 kgf)

*Tested using 1/4" #14 external hex head self drilling screws.
†Tested as an assembly of STRONGIRT and insulation. Test reports are available upon request.
‡Typical value



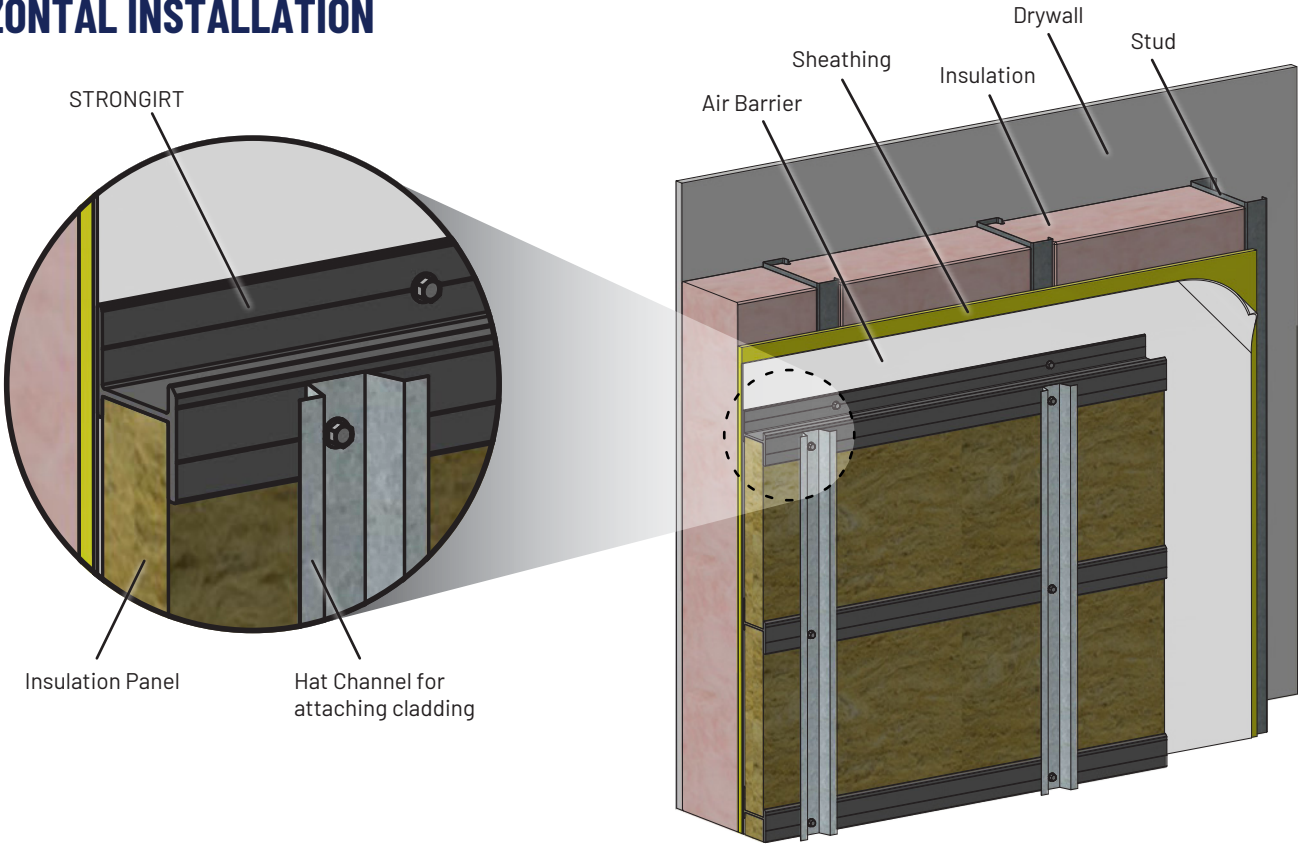
ASTM E84 is the standard test method for assessing the surface burning characteristics of building products to observe the flame spread and developed smoke density. The above photos show the STRONGIRT and mineral wool insulation assembly before (left) and after (right) testing.



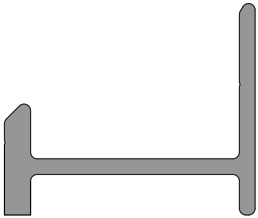
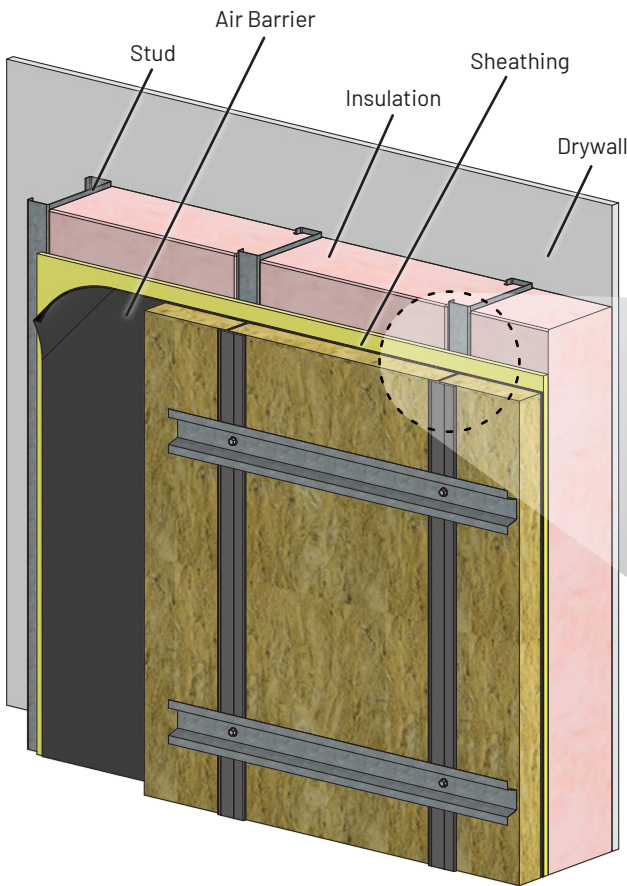
NFPA 285 tested and passed. NFPA test data is available at strongirt.com



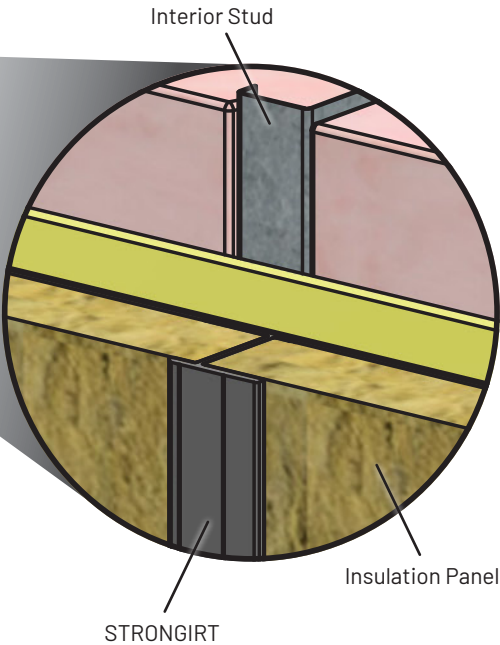
HORIZONTAL INSTALLATION



VERTICAL INSTALLATION



STRONGIRT can be fabricated to provide a non-structural J-channel or starter strip. See the Installation Detail drawings on strongirt.com for more information.



HOW STRONGIRT COMPARES



PREMIUM QUALITY

Custom-engineered, 100% FRP system (no metal to rust or react) with superior pullout strength and better overall performance. Strongwell has made FRP through the pultrusion process since 1956.



MADE IN THE USA

STRONGIRT is manufactured exclusively in the USA by Strongwell, the world's recognized leader in pultruded FRP. It meets the Buy America Preference requirements of the Build America, Buy America Act (BABAA) and qualifies as "Manufactured Goods" according to the Act.



DECLARE

STRONGIRT is Living Building Challenge Criteria Compliant and I-13 Red List: LBC Red List Free



NFPA 285-19

STRONGIRT has been independently tested to NFPA 285-19 using a variety of materials.

See strongirt.com for more information on materials which have been tested and passed.



EPD VERIFIED

Since STRONGIRT is made of 100% corrosion resistant FRP, it has an extraordinary life cycle assessment (LCA), leading to its Environmental Product Declaration (EPD) verification.



EMI/RFI TRANSPARENT

Several of Strongwell's pultruded products are approved via DRJ TER for RF Panel Rooftop Enclosure Systems, which is approved by Los Angeles Department of Building and Safety (LADBS), now in place of the L.A.R.R.



ISO

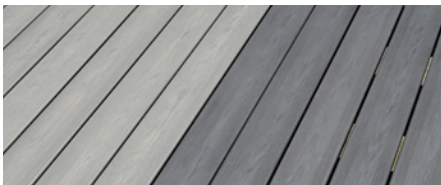
All Strongwell U.S. manufacturing facilities are ISO 9001 Quality Management System Certified. This ensures the highest quality standards for producing structural fiberglass in a world class facility.



ASTM

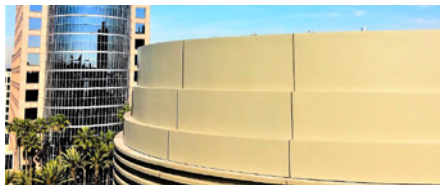
All Strongwell testing conforms to stringent ASTM testing protocols.

OTHER STRONGWELL ARCHITECTURAL PRODUCTS



STRONGDEK™ Structural Composite Decking System

STRONGDEK® is a patented system that offers unmatched strength and long-term durability in an aesthetically pleasing and easy-to-install package with virtually no maintenance required.



EXTREN® Structural Shapes & Plate

EXTREN® is a strong, light weight, corrosion resistant alternative to steel, aluminum, or wood. Over 100 standard shapes are available, including I-beams, wide-flange beams, channels, tubes, plate, and more.



STRONGRAIL® Architectural Railing & Fencing Systems

STRONGRAIL® handrail and fencing systems are strong, attractive, and withstand even corrosive salt-water environments with ease. Systems can be made to meet ADA requirements.

STRONGIRT® is made exclusively by:



The World Leader in Pultrusion and
Pultruded Fiberglass Structures & Shapes



400 Commonwealth Ave., Bristol, VA 24201 USA
(276) 645-8000 • www.strongirt.com

ISO 9001 Quality Certified Manufacturing Plants

ST0625
© 2025 Strongwell